

InterActive SyslogViewer

© 2008 Adiscon GmbH

Table of Contents

Part I About InterActive SyslogViewer	2
1 Features	2
2 Requirements	2
Part II Options & Configuration	2
1 Launching InterActive SyslogViewer	2
2 Using InterActive SyslogViewer	3
3 Options & Menus	3
File Menu	3
Options	4
General Options.....	5
Notifications & Questions.....	7
Edit Menu	7
View Menu	8
Help Menu	9
4 Toolbar	10
Index	0

1 About InterActive SyslogViewer

InterActive SyslogViewer is a tool that let's you review your syslog data very easy. It is a separate syslog server, that simply displays all incoming data. By this you can see directly what is happening.

1.1 Features

Fast and Easy syslog Viewing

The SyslogViewer allows you to directly view and review syslog messages. Therefore you can react much better on occuring problems or check if everything is ok.

Export selected data

You can export selected data for further manual processing, like sending an email to your colleague for informing them about what is happening.

1.2 Requirements

Any Windows-NT based operating system like Windows 2000, XP or Vista.

You need .NET 2.0 framework installed in order to run Adiscon's Syslog Viewer.

Hardware requirements:

- 32MB RAM

2 Options & Configuration

InterActive SyslogViewer is an add-on to the MonitorWare Agent and WinSyslog. **Please note that it is a utility program, with a primary focus on real-time troubleshooting.**

InterActive SyslogViewer is **not** meant to continuously monitor a system. This is what the service is designed for. While Interactive SyslogViewer allows to view current syslog traffic, the service should be used for all other purposes, like creating log files.

2.1 Launching InterActive SyslogViewer

To run the InterActive SyslogViewer, click the "SyslogViewer" icon present in the Programs Folder -> MonitorWare Agent/WinSyslog located in the Start menu.

It can also be launched from the command prompt:

- Open a Command Prompt window
- Change to the drive and directory where the MonitorWare Agent is installed.

- Type "InteractiveSyslogViewer.exe" and hit enter.

Available Command Line parameters are:

/? = Show Options

/autolisten = Start Syslog Server automatically

/port=10514 = Overwrites the configured port

/windowpos 0,0,512,800 = Sets default window positions

2.2 Using InterActive SyslogViewer

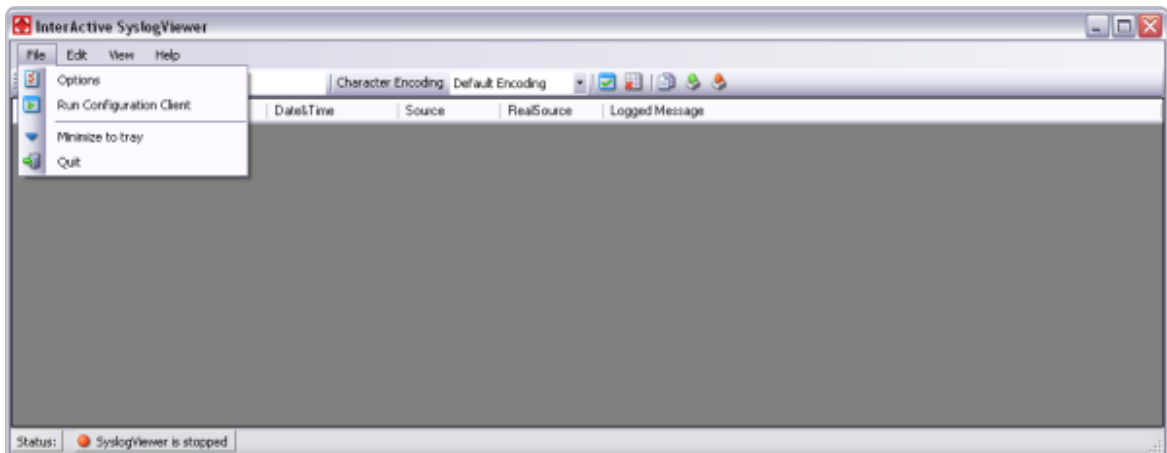
InterActive SyslogViewer is an add-on to the MonitorWare Agent and WinSyslog. **Please note that it is a utility program with a primary focus on real-time troubleshooting.**

Interactive Syslog Server is **not** meant to continuously monitor a system. This is what the service is designed for. While Interactive Server allows to view current Syslog traffic, the service should be used for all other purposes, like creating log files.

2.3 Options & Menus

Please find more information about the different menus and options in the respective sub-category.

2.3.1 File Menu



File Menu

Options

This will open the Options dialog. Please see the sub-chapters for more details on this.

Run Configuration Client

This option will open the configuration client of MonitorWare Agent/WinSyslog. Here

you can do detail configuration of the service.

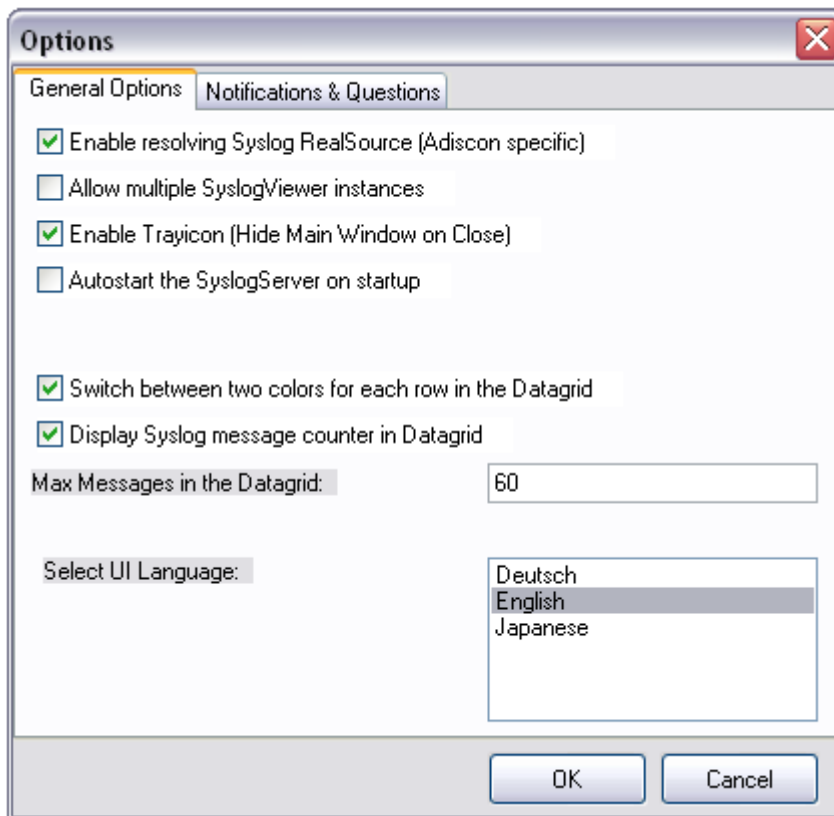
Minimize to tray

This will minimize the InterActive SyslogViewer window and remove it from the taskbar. You can open it again by double-clicking on the icon in the system tray.

Quit

By clicking here, InterActive SyslogViewer stops receiving data and it will close the application.

2.3.1.1 Options



General Options Tab

Enable Resolving Syslog RealSource (Adiscon specific)

With this option enabled, you can see the real source in multiply forwarded messages. That means, you can see the system that forwarded the message and the system where the message originates from.

Allow multiple SyslogViewer instances

You can have multiple instances of the InterActive SyslogViewer by activating this option. This allows you to have multiple forwarding servers sending on different ports and receive their messages separately.

Enable Trayicon (Hide Main Windows on Close)

Enable this to have a tray icon. This enables a soft-close. InterActive SyslogViewer will stay active, but the window will be completely hidden except the tray icon. By double-clicking on the icon, the window will show again.

Autostart the SyslogServer on Startup

Enable this to start the syslog server directly when starting InterActive SyslogViewer.

Switch between two colors for each row in the Datagrid

To have a better overview over the syslog data, activate this option.

Display Syslog message counter in the Datagrid

You can enable a counter by checking the box here. It will count further, even if the maximum of messages is already exceeded.

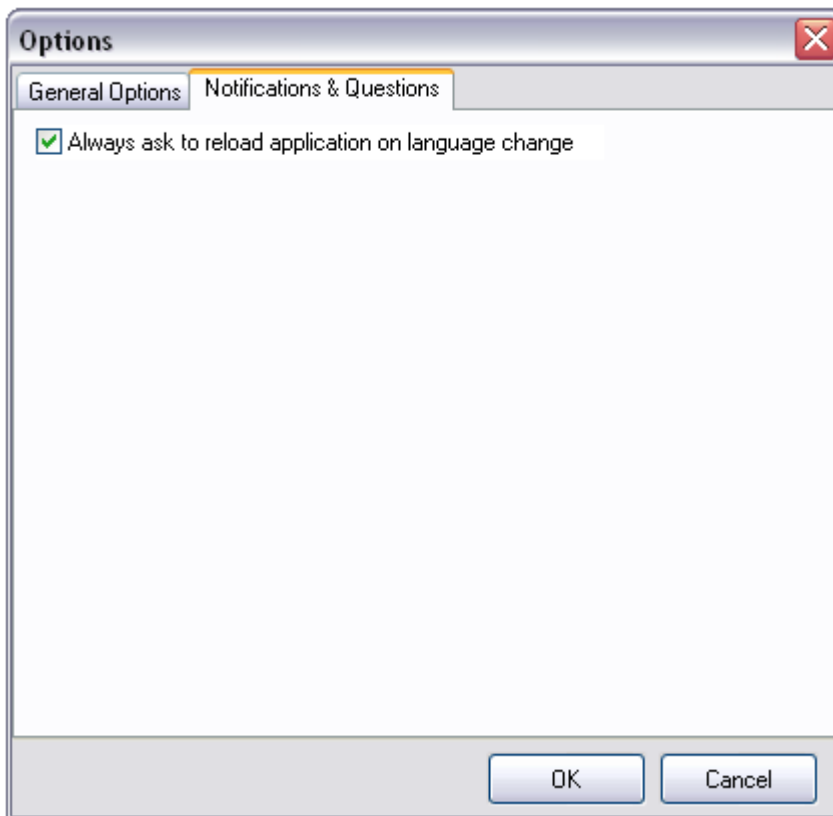
Max Messages in the Datagrid

Here you can adjust the maximum messages that will be available in the datagrid. By increasing this value, you can store more messages for direct review. **Please note, that increasing the maximum number of messages will have a severe impact on your memory.**

Select UI Language

Here you can choose your favorite language for the InterActive SyslogViewer. By default it is english. You can choose german or japanese as well.

2.3.1.1.2 Notifications & Questions

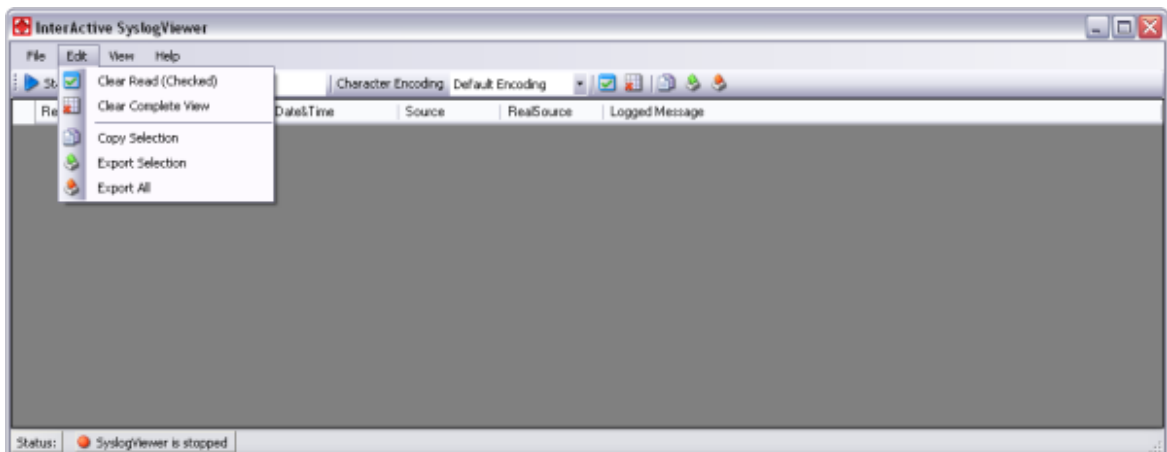


Notifications & Questions Tab

Always ask to reload application on language change

While the box is checked, InterActive SyslogViewer will ask to reload the application on a language change. This is, because the language file can only be loaded while starting the application and not while it is running.

2.3.2 Edit Menu



Edit Menu

Clear Read (Checked)

By activating this, you can clear the checkboxes of the items your marked as read.

Clear Complete View

This option will clear the screen and remove all received data from the view.

Copy Selection

Having selected one or mutiple entries, you can copy them using this function.

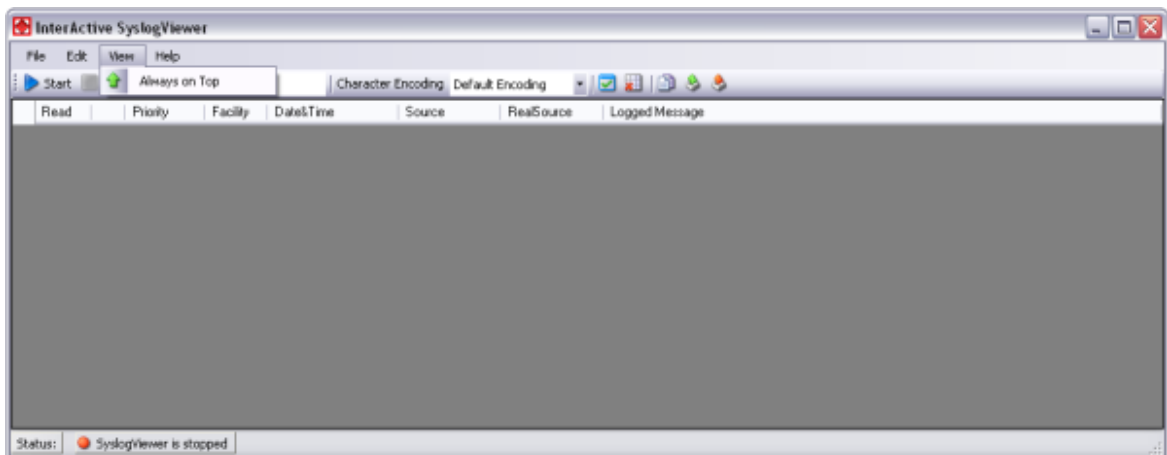
Export Selection

Instead of copying you can extract the selected data into a text file.

Export All

Or you directly export all the data that is currently in the list.

2.3.3 View Menu

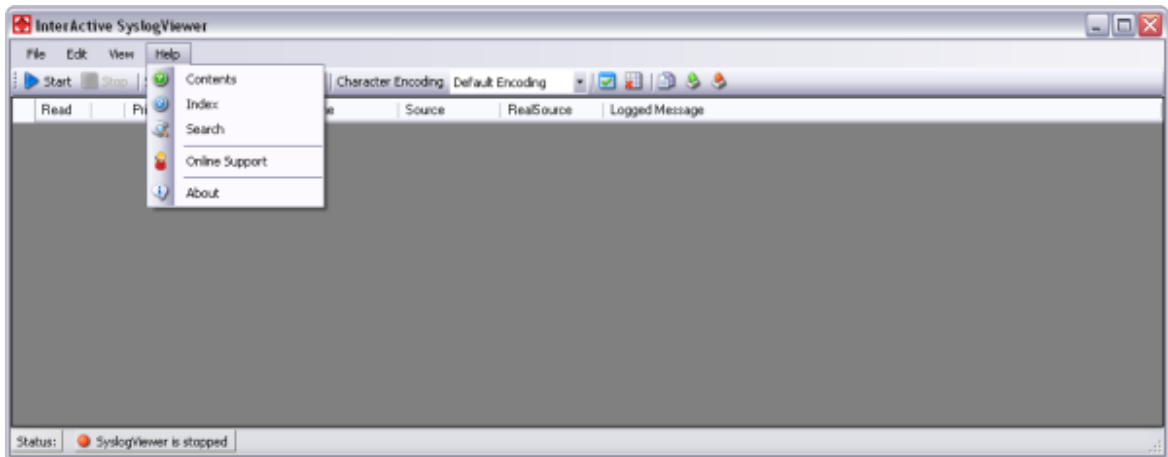


View Menu

Always on Top

This option is very self-explanatory. While activated, the InterActive SyslogViewer window will stay on top of all other applications, so you will have all incoming log data directly in your point of view.

2.3.4 Help Menu



Help Menu

Contents

Show the manual.

Index

Show the manual index.

Search

Search the manual.

Online Support

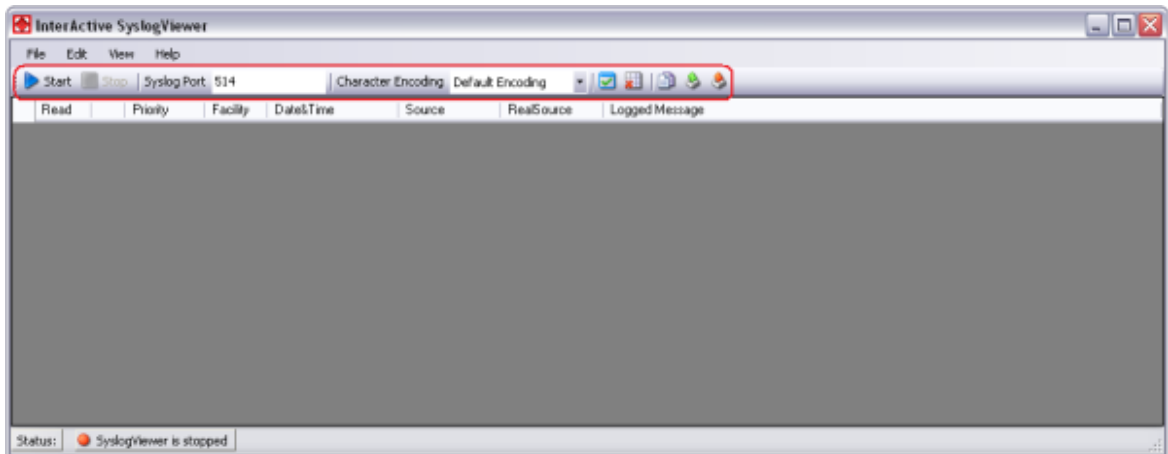
By clicking here, a browser window will open and you will be directed to our support website.

About

The About-window will give you additional information to the tool, like the program version.

2.4 Toolbar

In the toolbar, the most important options are represented by icons for direct use.



The Toolbar

Start

With the start button, you start the receiving service. Now the InterActive SyslogViewer will receive and display all incoming messages. If messages were sent before starting the service, they will be dropped.

Stop

Here you can stop the receiving server.

Syslog Port

Here you can define the syslog port where the Viewer should be receiving the syskigness

Character Encoding

Here you can define how characters will be decoded. You can choose from Default Encoding (depending on OS), Ascii, Unicode, UTF8 or UTF32.

Clear checked

With this button, you can clear all the checkboxes in front of the messages.

Clear View

By clicking on this button, all data will be deleted from you datagrid.

Copy Selection

This helps you copying the selected messages.

Export Selection

You can export the selected data directly by using this button.

Export All

Export the complete data that is in the data grid.